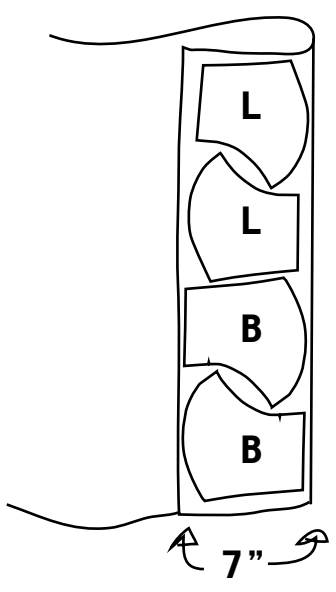


Body Fabric cut 2

sew with 1/4" seam allowance
edge stitch at 1/16"

1/2"
1/8"

to cut fold fabric
to 7" width
and place
as suggested:
makes 2 masks



_____ this should be 2"
if printed
at correct scale



Lining Fabric

cut 2

sew with 1/4" seam allowance
edge stitch at 1/16"

1/2"

1/8"

thank you for wearing a mask!
some notes:

to sanitize - please wash

before/between each wear.

stay clean - wash hands first

always clean before putting on and taking off. remove from the ear loops and avoid touching front.

try the mask on at home - adjust

the elastics are knotted loosely, tighten when they feel right.

practice - try at home first!

make sure to avoid touching your mask when outside the home.

This mask does not replace handwashing or social distancing.

please visit www.alexusprojects.ca/face-mask-pattern
for more info & the pattern!

@alexus_projects

**Alexus
Projects**